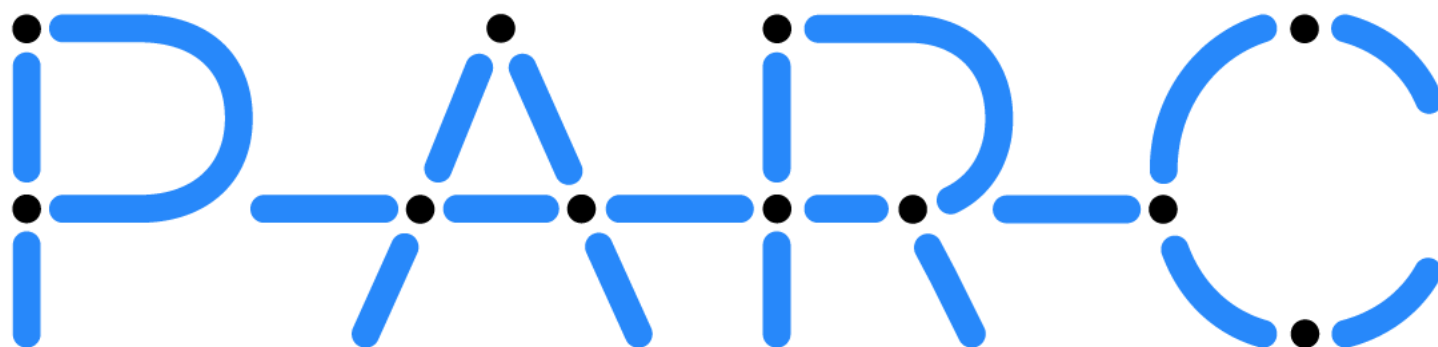
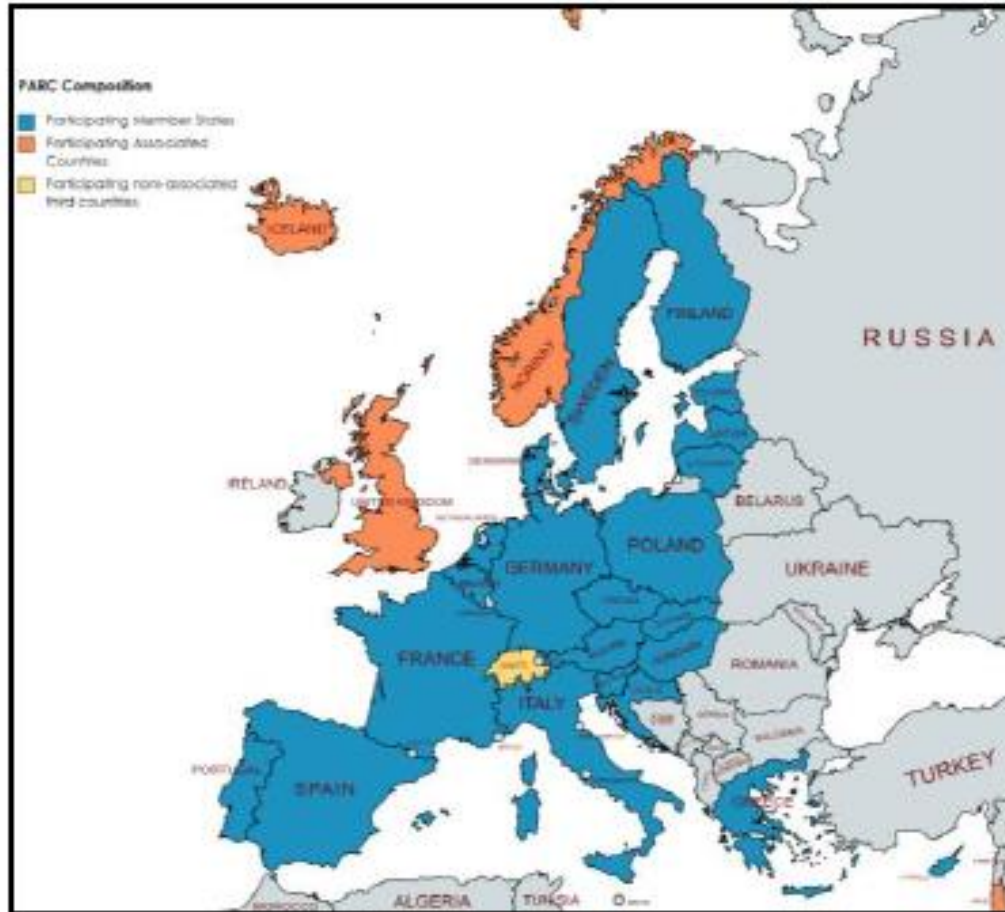


Dansk deltagelse i:



Partnership
FOR THE
Assessment
OF
Risks
FROM
Chemicals

PARC



7-år partnerskab under “Horizon Europe for the funding of research and innovation”

Periode: 1. maj 2022- 30. april 2029

28 deltagende lande

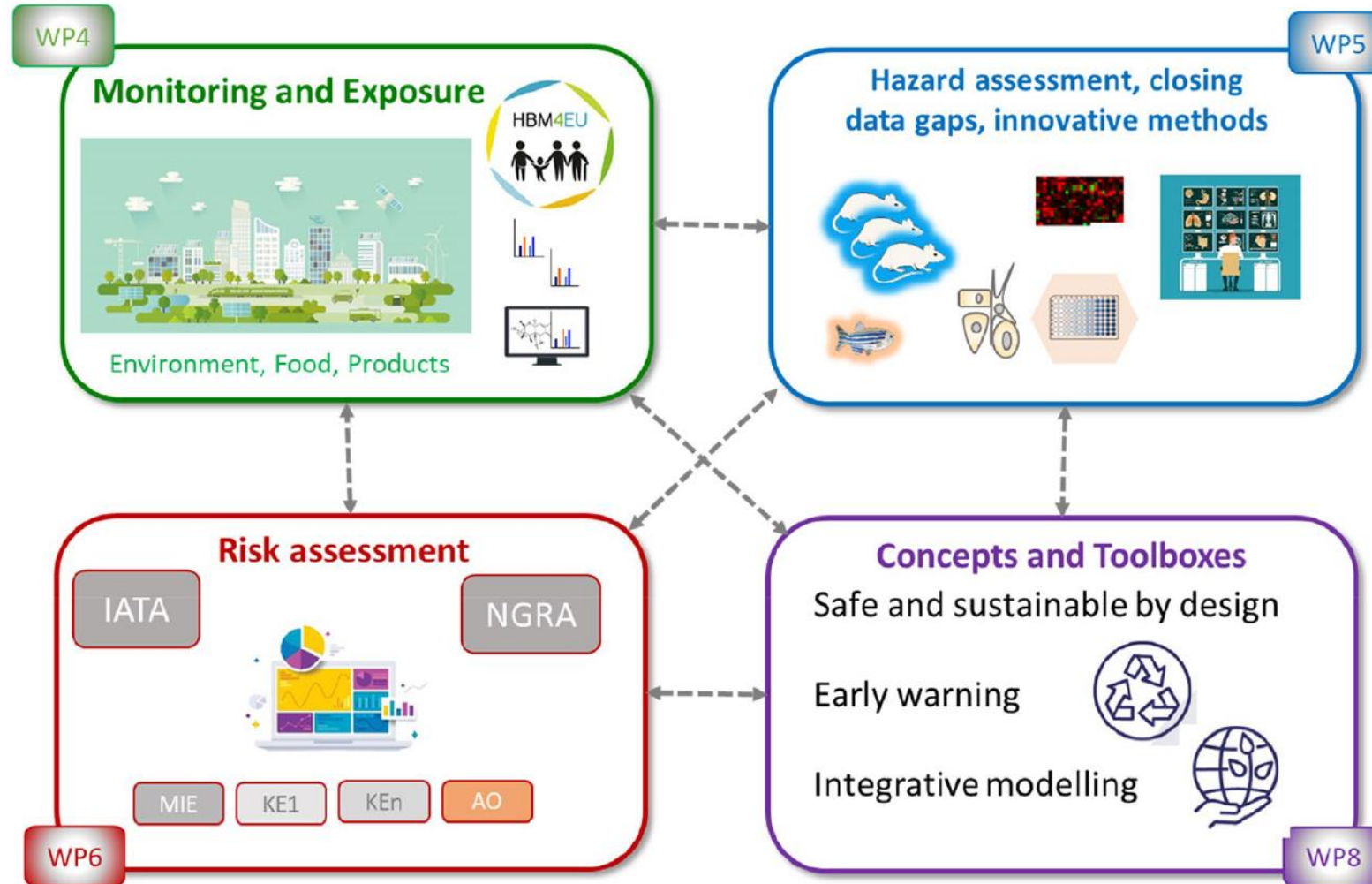
200 Partnere inkl. nationale styrelser og forskningsinstitutioner, ECHA, EFSA, EEA

Samlet budget: EUR 400 mill

- 50 % EU bidrag

- 50 % medfinansiering fra partnerne

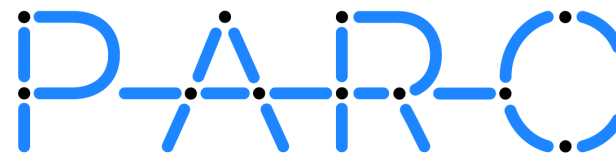
PARC



IATA: Integrated Approaches to Testing and Assessment

NGRA: Next-generation risk assessment

MIE: molecular initiating event, KE: key event, AO: adverse outcome



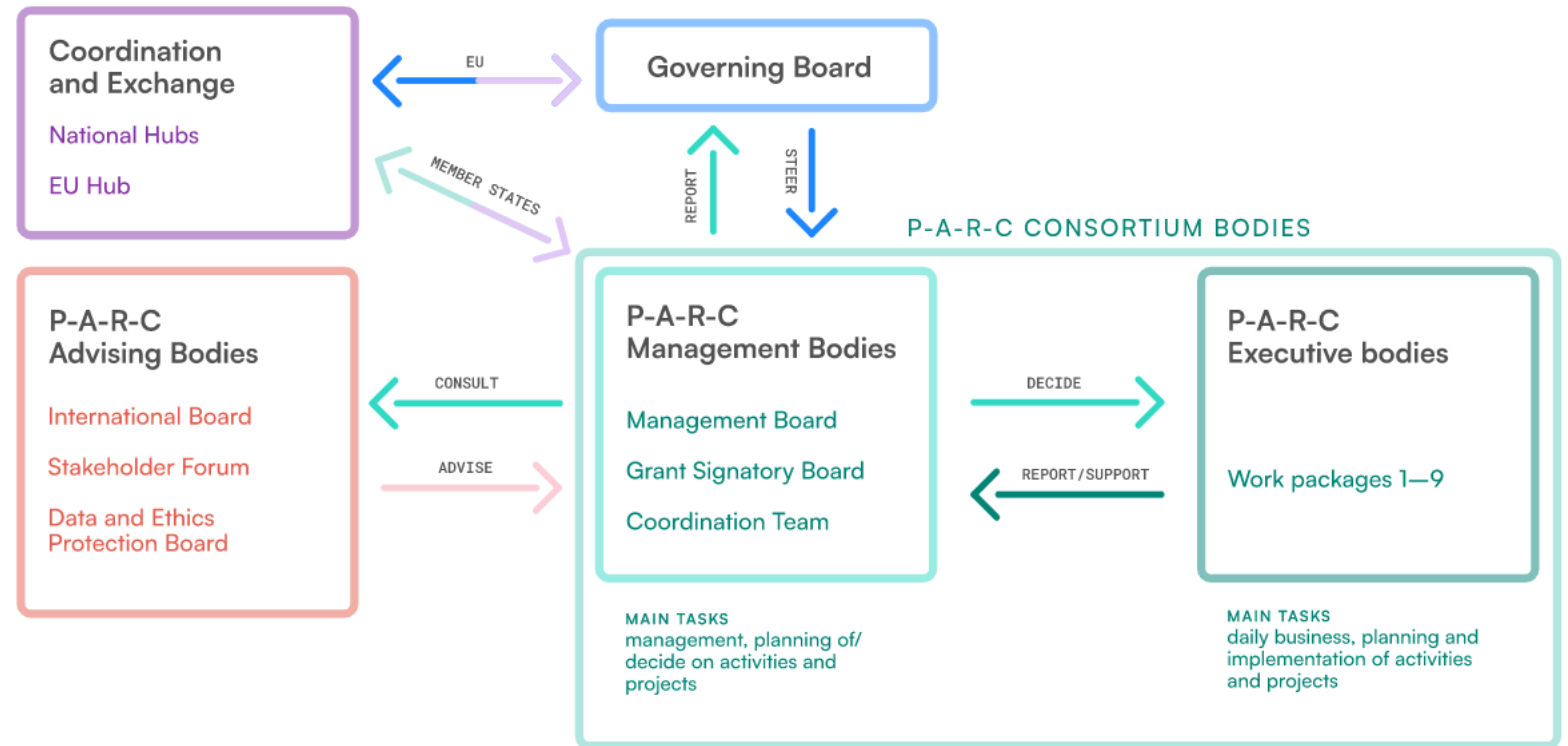
Organisation

Samarbejde om "Regulatory Science" på højeste niveau

Nationale ministerier/styrelser
EC DGs: ENV, GROW, RTD, SANTE, JRC
European agencies: ECHA, EFSA, EEA

Vidensdeling og kapacitetsopbygning

NGOer, Industriforeninger, fagforeninger, forbrugerforeninger



Det forventes at PARC resultater kommer til at spille ind i:

EU Sustainable Development Strategy: Kemikaliestrategi for bæredygtighed

EU Green Deal: cirkulær økonomi, bygningsrenovering, biodiversitet, landbrug (fork-to-farm), innovation



Dansk deltagelse

Miljøstyrelsen

Dansk partner og koordinator af dansk deltagelse

Affiliated entities:

Københavns Universitet (KU)

- Institut for Plante- og Miljøvidenskab

Danmarks Tekniske Universitet (DTU)

- Fødevareinstituttet
- Institut for Miljø- og Ressourceteknologi

Region Hovedstaden (RegionH)

- Afd. for Vækst og Reproduktion, Rigshospitalet - Videncenter for Hormonforstyrrende Stoffer
- Afd. for Allergi, Hud- og Kønssygdomme, Gentofte Hospital - Videncenter for Allergi

Aarhus Universitet (AU)

- Institut for Folkesundhed
- Institut for Miljøvidenskab

Syddansk Universitet (SDU)

- Biologisk institut



WP1 Coordination and Management

- 1.1: Overall executive management and support of the Partnership (*GB*)
- 1.2: Scientific steering and implementation of Annual Work Plans (*NHCP*)

WP2 A common science-policy agenda

- 2.1: Priority setting (*NHCP*)
- 2.3: Sustainability (*NHCP*)

WP4 Monitoring and exposure

- 4.1: Human Biomonitoring
- 4.2: Environmental and multisource monitoring
- 4.3: Innovative methods and tools for monitoring and surveys

WP5 Hazard assessment

- 5.1: Toxicity testing addressing data gaps of concern
- 5.2: Innovative methods and tools for toxicity testing and modelling
- 5.3: Quantitative systems toxicology and development of new AOPs

WP6 Innovation in regulatory risk assessment

- 6.1: Integrated Approaches to Testing and Assessment of Chemicals
- 6.2: Integrative exposure and risk assessment
- 6.3: Review of risk assessment methodology
- 6.4: Regulatory practices and potential research areas

WP8 Concepts & toolboxes

- 8.1: Safe and sustainable by design (SSbD)
- 8.2: Scientific and technical basis for an Early warning system (EWS) on chemical risks
- 8.3 Integrative models

WP9 Building infrastructural and human capacities

- 9.3: Joint activities – harmonization



Dansk hub

Medlemmer af den danske PARC hub: Miljøstyrelsen, KU, AU, DTU, SDU, RegionH

Følgegruppe - tredjeparter dvs. uden pligter og rettigheder under PARC –
Fødevarestyrelsen, Sundhedsstyrelsen, Arbejdstilsynet, Lægemiddelstyrelsen,
Forskning- og Innovationsstyrelsen

Formål:

- Vidensdeling omkring PARC aktiviteter fra MST til AEs og mellem alle medlemmerne
- Koordinere dansk input til PARC prioriteringer og derved sikre, at der kan gives relevante policy-relaterede input vedrørende danske prioriteringer



mere information

Artikel om PARC

Archives of Toxicology
<https://doi.org/10.1007/s00204-022-03435-7>

LETTER TO THE EDITOR, NEWS AND VIEWS



A walk in the PARC: developing and implementing 21st century chemical risk assessment in Europe

P. Marx-Stoelting¹ · G. Rivière² · M. Luijten³ · K. Aiello-Holden¹ · N. Bandow⁴ · K. Baken¹⁵ · A. Cañas⁵ · A. Castano⁵ · S. Denys⁶ · C. Fillol⁶ · M. Herzler¹ · I. Iavicoli⁷ · S. Karakitsios⁸ · J. Klanova⁹ · M. Kolossa-Gehring⁴ · A. Koutsodimou¹⁰ · J. Lobo Vicente¹¹ · I. Lynch¹² · S. Namorado¹³ · S. Norager¹⁴ · A. Pittman² · S. Rotter¹ · D. Sarigiannis⁸ · M. J. Silva¹³ · J. Theunis¹⁵ · T. Tralau¹ · M. Uhl¹⁶ · J. van Klaveren³ · L. Wendt-Rasch¹⁷ · E. Westerholm¹⁷ · C. Rousselle² · P. Sanders²

Marx-Stoelting, P., Rivière, G., Luijten, M. *et al.* A walk in the PARC: developing and implementing 21st century chemical risk assessment in Europe. *Arch Toxicol* (2023). <https://doi.org/10.1007/s00204-022-03435-7>

<https://rdcu.be/c6eeo>

Ny webside: www.eu-parc.eu

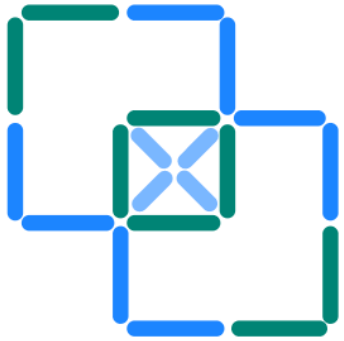
PARC Newsletter (2 gange om året)

PARC Science Digest (månedligt)

Tilmelding til Newsletter og Science Digest via hjemmesiden

PARC

THEMATIC AREAS



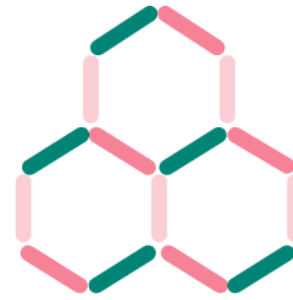
Risk assessment

Monitoring	+
Hazard assessment	+
Innovation	+



Tools & resources

Innovative tools and methods	+
Safe and sustainable by design	+



Building capacities

Network of Laboratories	+
Online catalogue on environmental and biomonitoring	+
Trainings	+



Science to policy

Science to policy dialogue network	+
PARCopedia	+
PARCroute	+
Policy uptake and regulatory achievements	+